



2016 Angus in Action Sale

Saturday, October 22nd 12 pm
Nappan Test Station, Nappan, NS



List of Consignors:

Top of the Hill Farm	David & Kelsey Siddall, Southampton, NS	(902) 546-2598
Thunderbrook Farms	Beth Trueman, Truemanville, NS	(902) 667-1137
Lindale Farms	Dale & Linda Lackie, Southfield, NB	(506) 432-0729
Worth-a-Bit Angus	Eric & Tim Dixon, North Tryon, PEI	(902) 432-4771
Loyalist View Angus	James Worth, Hampshire, PEI	(902) 393-4753
Temple Stewart	Temple Stewart, North Wiltshire, PEI	(902) 566-3804
MacKinnon Homestead	Sandra & Susan MacKinnon, Kinross, PEI	(902) 330-0458
Hillcrest Farm	Bill Best, Charlottetown, PEI	(902) 628-7786
Wheatley River Farm	Glen & Ronnie Ford, Oyster Bed, PEI	(902) 394-0059
Garvie Mountain Angus	Welch Family, Glassville, NB	(506) 328-5393
Model Farm Angus	Bob Higgins, Quispamsis, NB	(506) 847-8265
O'Faelen Farms	Ron Whalen, Vernon River, PEI	(902) 343-6135
Bannockburn Valley Farm	Dixon Family, Clyde River, PEI	(902) 675-2229

Please contact the consignors directly if you need any further information on their sale cattle.
Updated information on sale entries will be announced on sale day.

Terms:

Cash or satisfactory cheque. Payment shall be made to the clerk immediately following the sale.
Release of cattle will be given only when satisfactory settlement has been made by the buyer.

Conditions of Sale:

Each lot will be sold to the highest bidder. In the event of any dispute, the Auctioneer's decision shall be final. Announcements from the Auctioneer's stand on sale day will supersede any information in the catalogue. Sale is being held under the terms of the Canadian Angus Association.

Liability:

All persons who attend this sale do so at their own risk, and the owners, auctioneer and management assume no liability for accidents that may occur. The management of the sale merely acts as agent between buyer and seller and is not responsible for any failure on the side of either party to live up to his obligation.

Sale Committee:

Ron Ford	(902) 621-2096	Kurt Duncan	(902) 393-3032
Stephen Mutch	(902) 626-8524	Tim Dixon	(902) 432-4771



Thunderbrook Catnip 4C

Purebred Bred Female

1835343 BCT 4C Jan 15/2015



Breeding Info: Bred AI to PVF INSIGHT on Apr 9 and May 1. Exposed May 10 to Aug 10 to Bonshaw Blue Jay 51B. Preg. checked Aug 18th and confirmed safe in calf (90+ days)

For my first offering to the Angus in Action sale, I have decided to part with a heifer that is flashy in design yet so productive in her genetic make up. This New Attraction daughter is an upheaded, long female that has tremendous sweep to her body. She is made a lot like her young mother, a sound, moderately framed productive cow, with a beautiful udder and who has yet to disappoint me.

Birth Weight: 78 lb Adj. Weaning Weight: 654 lb

CANADIAN ANGUS ASSOC. EPDs (02/16)									
BW	WT	YW	Total Mat.	CE	MCE	YG	REA	CW	MILK
				+0.5	+3.5				

O C C GENESIS 872G	O C C DOCTOR 940D
S: DUFF NEW ATTRACTION 6110	BLACKBIRD OF R R 1204
O C C DIXIE ERICA 814G	OCC ANCHOR 771A
	O C C DIXIE ERICA 764C
S A V PIEDMONT 0882	S A V PIONEER 7301
D: LXL MISS ANNA BLACKBIRD 4A	S A V ERICA 0806
LXL MISS BLACKBIRD 25T	N BAR EMULATION EXT
	BLACKBIRD OF MODEL FARM 12N

Consigned by: Thunderbrook Farms, Beth Trueman, Truemanville, NS (902) 667-1137



Pick of the Herd - Lindale Farms

Offering for sale your pick of the 2016 calf crop!

Heifer Calves by: Red Worth-A-Bit Sakic 2A, Red Lazy MC Honky Tonk 11X, Red Lazy MC Smash 4N, Red Six Mile Grand Slam 130Z, Red Trotters Stronghold 156.

Bull Calves by: Red Worth-A-Bit Sakic 2A, Red Lazy MC Honky Tonk 11X, Red Lazy MC Spyder 149A

Additional Details: The buyer will come to the farm before November 7 to select their calf.
We will take the buyer out to a nice restaurant for supper when they come to do the selection.
We will deliver the calf free to anywhere in the Maritime provinces.
We will give the buyer \$100 if they wish to bring their own trailer to pick up the calf.

Consigned by: Lindale Farms, Dale and Linda Lackie, Southfield, NB (506) 432-0729



Left: Progeny of Red Lazy MC Spyder 149A

Right: Progeny of Red Lazy MC Honky Tonk 11X





Top of the Hill Duchess 6D



Purebred Open Female

1895400 TOTH 6D Jan 16/2016

Duchess 6D is a sweet made heifer with lots of show appeal. She has already made an impact in the show ring by winning the Canadian Bred class at Showdown and also stood 2nd to the Calf Champion in her open show class.

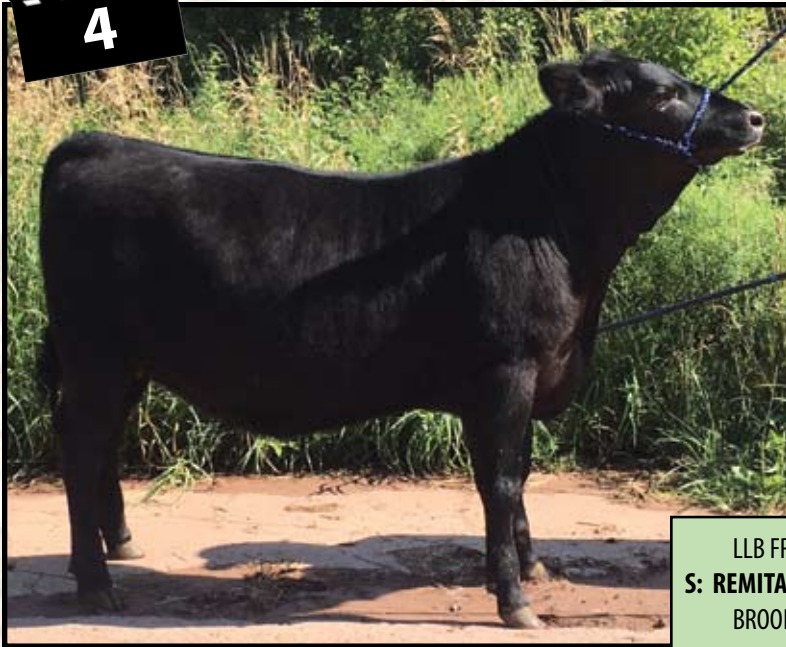
She is very quiet to work around as she proved by being shown in 4-H by a first year member. She will make a great show prospect for 4-H or open show as she is straight out of our show string. She should turn into a great cow and raise great calves just like her mamma. We believe she is the sleeper of the group so don't let her get past you come sale day.

TGA BLACKMAN 8311U	GEIS BLACKMAN 224'05
S: HMF BLACKMAN 17Y	TGA MS DELEGATE 3145N
NORTHERN VIEW DUCHESS 75W	HF KODIAK 5R
YOUNG DALE AVENGER 89S	S00 LINE DUCHESS 7266
D: BANNOCKBURN VALLEY TRILL 7W	YOUNG DALE TOUCH DOWN 36M
BANNOCKBURN VALLEY TRILL 38S	YOUNG DALE GEORGINA 15M
	ROYAL VISION 3M
	BANNOCKBURN VALLEY TRILLIUM 35

Consigned by: Top of the Hill Farm, Southampton, NS (902) 546-2598



Top of the Hill Dolly 2D



Purebred Open Female

1895401 TOTH 2D Jan 3/2016

After a lot of deliberating, we have decided for our first year of consigning to the Angus in Action Sale we want to consign one of the best all around calves we have had to date with excellent pedigree.

Dolly 2D is straight out of our show string. She is one of the very first Remitall Odyssey 67X females to sell in Eastern Canada. Her half sibling was Reserve Grand Gemale at the Canadian Western Agribition last year and sold for \$32,000. Her dam, KJDF Yvonne 11Y, has proven herself over and over again, most recently with raising a stylish heifer a couple years ago that the Mutch Family purchased from us and have done well with in the show ring. Dolly 2D is a big, deep bodied heifer with tons of length and eye appeal. If she's anything like her mamma, she will have tons of milk. Don't miss your opportunity to purchase this genetic powerhouse. The possibilities are endless.

LLB FREE WHEELER 268S	HF FREE WHEELER 191N
S: REMITALL F ODYSSEY 67X	LLB NITCHEE 637J
BROOKMORE KARAMA 100T	S A V 004 DENSITY 4336
KRONE ROYAL 1140	BROOKMORE KARAMA 24M
D: KJDF YVONNE 11Y	B/R NEW DESIGN 036
JEM BRIDE 46M	LEACHMAN ERICA 6267
	JEM STOCKMAN 3K
	BANNOCKBURN VALLEY BRIDE 8J

Consigned by: Top of the Hill Farm, Southampton, NS (902) 546-2598



Worth-a-Bit Pride 7x 11B

Purebred Bred Female

1783106 TXE 11B Jan 14/2014



Bred April 26, 2016 to Little Valley Resource 8C.
Due Feb 3, 2017.

Pride 11B is a very promising Two Year Old female. She has the style, structure, and pedigree to produce some excellent progeny. Her sire, Chico Xplosive 8X, has left us some awesome females and Pride comes from a tremendous cow family. Bred to our new herd sire, who is a SAV Resource son, you will have the opportunity to have one of his first calves.

Sells as a buyers choice with Lot 6.

CANADIAN ANGUS ASSOC. EPDs (02/16)									
BW	WT	YW	Total Mat.	CE	MCE	YG	REA	CW	MILK
+3.0	+48	+85	+42	+2.0	+7.0			+26	+18

S A V PIONEER 7301	S A V FINAL ANSWER 0035
S: CHICO XPLOSIVE 8X	S A V BLACKBIRD 5297
CHICO BEAUTY LASS 43P	MILLCREEK DIVERSITY
	CHICO BEAUTY LASS 46F
MVF VRD DATELINE 913P	VERMILION DATELINE 7078
D: WORTH-A-BIT PRIDE 7X	MVF LADY DI 60K
PRIDE OF MODEL FARM 23N	D D ELEVATION 127
	PRIDE OF MODEL FARM 8L

Consigned by: Worth-a-Bit Angus, Eric and Tim Dixon, North Tryon, PEI (902) 432-4771



Worth-a-Bit 5D

Steer Calf

TXE 5D Jan 11/2016



Sharp looking steer calf that has the body, bone and style to compete. The Titlest calves are known nationwide for their muscle and shape.

5D is out of Lot 5, Worth-a-Bit Pride 7x 11B, with a birth weight of 50 lbs.

Sells as a buyers choice with Lot 5.

RA LINCOLN W144	REICH LEAD ON 424
S: S TITLST 1145	RA BRANDY P11
S CORA 572	VERMILION DATELINE 7078
	H L LADY DIVIDEND 422
CHICO XPLOSIVE 8X	S A V PIONEER 7301
D: WORTH-A-BIT PRIDE 7X 11B	CHICO BEAUTY LASS
WORTH-A-BIT PRIDE 7X	MVF VRD DATELINE 913P
	PRIDE OF MODEL FARM 23N

Consigned by: Worth-a-Bit Angus, Eric and Tim Dixon, North Tryon, PEI (902) 432-4771



Loyalist View Lori 3D



Purebred Open Female

1905810 JGW 3D Feb 9/2016

Dam was bought at this sale as a yearling in 2008. The dam has had tremendous success in the show ring, placing 3rd in her heat at the Royal Winter Fair in 2009, as well as being Honourable Mention Champion Female at the 2009 Angus Showdown.

This heifer will make a great 4-H project animal, as she is halter broke and quiet tempered. Also vaccinated with Pyramid FPS and Presponse, and treated with Ivomec.

Birth Weight: 80 lb

GLEN ISLAY MARSHALL 24Z	COALBRIDGE MARSHALL 15
S: GLEN ISLAY MARSHALL 41B	GLEN ISLAY PRIDE 14S
GLEN ISLAY MAGGIE 47X	DOUBLE AA OLD POST BANDOLIER
EARLEY DATELINE 2M	GLEN ISLAY MAGGIE 5S
D: LINDALE LORI 2U	VERMILION DATELINE 7078
FOUNDATION LORI 316N	BROCKHILL BLACK DIAMOND 9G
	MACC SAUGY
	FOUNDATION EXECUTIVE 128J

Consigned by: James Worth, Hampshire, PEI (902) 393-4753



Loyalist View Blackbird 5D



Purebred Open Female

1905813 JGW 5D Feb 21/2016

This heifer would make a great 4-H project animal, as she is halter broken and is a quiet mannered calf.

Vaccinated with Pyramid FPS and Presponse, and treated with Ivomec.

Birth Weight: 75 lb

GLEN ISLAY MARSHALL 24Z	COALBRIDGE MARSHALL 15
S: GLEN ISLAY MARSHALL 41B	GLEN ISLAY PRIDE 14S
GLEN ISLAY MAGGIE 47X	DOUBLE AA OLD POST BANDOLIER
MVF DATELINE 221R	GLEN ISLAY MAGGIE 5S
D: HMF BLACKBIRD 19Z	MVF VRD DATELINE 13M
HMF BLACKBIRD 2T	MVF ROSEGAY 152H
	MVF TRIUMPH 20L
	HMF BLACKBIRD 2J

Consigned by: James Worth, Hampshire, PEI (902) 393-4753



HMF Blackbird 1D

Purebred Open Female

Pending TSS 1D Feb 4/2016



Sells together with Dam (10) - Buyer's Choice

A really nice heifer, sired by Peak Dot Resolute 37W. Will make a really nice 4-H project animals for next year.

Halter broken, treated with Pyramid FPS and Presponse, treated with Ivomec.

Birth Weight: 82 lb

S A V 004 PREDOMINANT 4438	S A V 8180 TRAVELER 004
S: PEAK DOT RESOLUTE 37W	S A V EMBLYNETTE 1182
MIA OF PEAK DOT 406R	BASIN HEIRESS 353
MVF DATELINE 221R	MIA OF PEAK DOT 316J
D: HMF DIAMOND BLACKBIRD 32X	MVF VRD DATELINE 13M
HMF DIAMOND BLACKBIRD 1L	MVF ROSEGAY 152H
	MAKENNEH'S TRAIL BLAZER
	DOUBLE DIAMOND R BLACKBIRD 68Z

Consigned by: Temple Stewart, North Wiltshire, PEI (902) 566-3804



HMF Diamond Blackbird 32X

Purebred Bred Female

1577179 TSS 32X Jun 10/2010



Sells together with Daughter (9) - Buyer's Choice

Bred March 21, 2016 to SAV Camaro 9272. Checked safe in calf. Should calve January 1st, 2017

Treated with Pyramid FPS and Presponse and with Ivomec.

Birth Weight: 87 lb

GEARLEY GRID POWER 158S	EARLEY GRID POWER 52P
S: EARLEY GRID 40W	EARLEY BARBARA 15M
C4 LASS 6807	D H D TRAVELER 6807
BABY BLACK THE ANSWER 108U	HARMONY HILL LASS 218
D: LLB MISSIE PRIDE 729X	S A V FINAL ANSWER 0035
LLB MISSIE PRIDE 481U	LEGEND LANE 410 ANNE 620
	DRYLAND ICEBERG 411
	LLB MISSIE PRIDE 308N

CANADIAN ANGUS ASSOC. EPDs (02/16)									
BW	WW	YW	Total Mat.	CE	MCE	YG	REA	CW	MILK
+2.7	+46	+83	+39	+3.0	+7.0			+24	+16

Consigned by: Temple Stewart, North Wiltshire, PEI (902) 566-3804



MKHF 24B Rachel 602D

Purebred Open Female

1913719 MKHF 602D Jan 11/2016



A solid, long bodied January heifer calf, showcasing some of the most proven Angus genetics. Her grandsire, HF Kodiak, is a touted production animal. Her sire, S Titlest, is noted for calving ease and performance and her dam is from the award-winning Locust Grove Angus herd in Ontario. She is super quiet, showy and halter broken.

Birth Weight: 75 lb Weaning Weight: 675 lb

RA LINCOLN W144	REICH LEAD ON 424
S: S TITLEST 1145	RA BRANDY P11
S CORA 572	VERMILION DATELINE 7078
HF KODIAK 5R	H L LADY DIVIDEND 422
D: LOCUST GROVE RACHEL 24B	SANDY BAR ADVANTAGE 43M
MFI RACHEL 9180	WILBAR RUBY 955N
	N BAR EMULATION EXT
	M B RACHEL LOU 817E

Consigned by: MacKinnon Homestead, Kinross, PEI (902) 330-0458



Bonshaw Dulcie 5D

Purebred Open Female

1896990 BEST 5D Jan 4/2016



A fancy show calf here. In her first show (Angus Showdown in Truro, 2016), she won her split and was Reserve Heifer Calf Champion. She should make a nice 4-H project for some astute purchaser.

Birth Weight: 78 lb

SOO LINE MOTIVE 9016	HF KODIAK 5R
S: ANDERSON MOTIVE 1212	TLA BEAUTY 5R
ANDERSON BARB ROSE 4210	S A V BISMARCK 5682
HF TIGER 5T	SOO LINE BARD ROSE 7317
D: BONSHAW TONI 25X	HF KODIAK 5R
BAYSHORE NANCY 003N	HF ECHO 84R
	W V F HB ATLANTIC NATL MERIT
	BAYSHORE NANCY 02D

Consigned by: Hillcrest Farm, Charlottetown, PEI (902) 628-7786



Bonshaw Catherine 91C

Purebred Bred Female

1835676 BEST 91C Jan 1/2015



Bred April 16, 2016 to Soo Line Motive 9016. Preg. checked favourable to the A.I. breeding. Exposed to Anderson Motive 1212 from April 21 to June 21, 2016.

A very correct and thick heifer. She should cross well with the fancy show bull Soo Line Motive 9016. This heifer is sired from our Soo Line bull and out of a cow that goes back to a Glen Islay cow. She has been haltered and tied, with some training.

Birth Weight: 85 lb Weaning Weight: 595 lb

CANADIAN ANGUS ASSOC. EPDs (02/16)									
BW	WW	YW	Total Mat.	CE	MCE	YG	REA	CW	MILK
+2.8	+34	+61	+36	0.0	+5.0			+11	+18

GEIS BLACKMAN 224'05	GEIS BLACKMAN 186'00
S: SOO LINE BLACKMAN 8448	GEIS PRIDE 139'01
SOO LINE ANNIE K 6271	CUDLOBE YELLOWSTONE 80M
	SOO LINE ANNIE K 3012
DMM FLEX 3M	DMM FLEX 122J
D: BONSHAW MARGARET 75W	KBJ MISTY 99X
BONSHAW MISS BLACKBIRD 5N	YOUNKIN TRIUMPH 4966
	GLEN ISLAY ERICA 21A

Consigned by: Hillcrest Farm, Charlottetown, PEI (902) 628-7786



Bonshaw Chloe 108C

Purebred Bred Female

1835686 BEST 108C Feb 15/2015



Pasture exposed from April 4 to June 4, 2016 to Anderson Motive 1212. Will calve mid-January 2017.

Out of a Saskatchewan cow by our Soo Line bull. A quality heifer here. She has been haltered and tied and led some. Will calve nice and early.

Birth Weight: 90 lb Weaning Weight: 619 lb

CANADIAN ANGUS ASSOC. EPDs (02/16)									
BW	WW	YW	Total Mat.	CE	MCE	YG	REA	CW	MILK
+4.8	+46	+82	+39	-1.0	+3.0			+27	+18

GEIS BLACKMAN 224'05	GEIS BLACKMAN 186'00
S: SOO LINE BLACKMAN 8448	GEIS PRIDE 139'01
SOO LINE ANNIE K 6271	CUDLOBE YELLOWSTONE 80M
	SOO LINE ANNIE K 3012
S A V NET WORTH 4200	S A V 8180 TRAVELER 004
D: LINWOOD LADY BATE 9U	S A V MAY 2410
LINWOOD LADY BATE 24P	STEVENSON BRUNO 561G
	LINWOOD LADY BATE 21L

Consigned by: Hillcrest Farm, Charlottetown, PEI (902) 628-7786



Red Wheatley River Camille

Red Purebred Bred Female

1846570 ZGR 7C Jan 21/2015



Bred AI on April 26, 2016 to Red Ter-Ron Monopoly 84A. Exposed to Miltonvale Tiger from May 5 to May 31, 2016. Exposed to Wheatley River Unanimous from June 1 to August 10, 2016.

Camille 7C is a nice made heifer. She has been in our show string the past two years and has shown well. Her dam is a productive, docile female we have shown in our show string. Camille has a great Red Angus sire that has produced some great females in herds across Canada. Lazy MC breeding has some of the top Red Angus breeding. Camille has been treated with Triangle 4 and Ivomec.

Birth Weight: 85 lb Weaning Weight: 725 lb

CANADIAN ANGUS ASSOC. EPDs (02/16)									
BW	WW	YW	Total Mat.	CE	MCE	YG	REA	CW	MILK
-0.9	+53	+79	+40	+1.2	-0.5			+16	+11

RED LAZY MC COWBOY CUT 26U	RED LAZY MC STOUT 30S
S: RED LAZY MC HONKY TONK 11X	RED LAZY MC STAR 185M
RED YY PATTY 701T	CROWFOOT 4130P
	RED BWA PATTY 10F
RED LCHMN TOP BRASS 1049H	RED WOODHILL TOP BRASS
D: RED JD LANN OMERON 18X	RED LEACHMAN MATTIE F1274
RED JD LANN OMERON 317R	RED BRYLOR RAINMAN 77M
	RED KORAN OMERON 147M 436

Consigned by: Glen and Ronnie Ford, Oyster Bed, PEI (902) 394-0059



Garvie's Erica 40D

Purebred Open Female

1902261 WEL 40D Feb 14/2016



This fancy heifer sired by our young herd bull MKHF Leapz 145B (sired by Vin Mar O'reilly Factor) is sure to be a show stopper for the 2017 show season. She's deep sided, clean fronted, with lots of capacity. This Heifer's dam is a full sister to the 2015 Angus in Action sale high seller (Garvie's Erica 29C) purchased by the Siddall family. Garvie's Erica 29C was successfully shown at the 2016 Angus Showdown in Truro, and most recently crowned the Reserve Junior Champion Female at the 2016 Nova Scotia Elite Beef Expo. Vaccinated with Triangle 10.

Birth Weight: 68 lb

CANADIAN ANGUS ASSOC. EPDs (02/16)									
BW	WT	YW	Total Mat.	CE	MCE	YG	REA	CW	MILK
				+2.0	+6.0				

VIN-MAR O'REILLY FACTOR	S A V FINAL ANSWER 0035
S: MKHF LEAPZ 145B	VIN-MAR EDELLA 2827
MKHF LEAPZ AND BOUNDZ 125Z	CURRAGHDALE ATTRACTION 32X
	CURRAGHDALE ERICA 65X
DAMERON FIRST IMPRESSION	S A V BRILLIANCE 8077
D: GARVIE'S ERICA 24B	DAMERON NORTHERN MISS 3114
ERICA OF GARVIE 1T	ROYAL PRECISION DRCC 4050P
	ERICA OF GARVIE 1N

Consigned by: Garvie Mountain Angus, The Welch Family, Glassville, NB (506) 328-5393



Model FA Miss Barbara 10D

Purebred Open Female

1898343 RHK 10D Feb 8/2016



This heifer is sired by SAV Radiance and the dam is by Earley Dateline 2M. She is thick and deep bodied. She is halter broken, vaccinated, and treated with Ivomec. This calf will make a great 4-H project animal.

Pictured is SAV Radiance, sire of the consignment.

Birth Weight: 70 lbs

CANADIAN ANGUS ASSOC. EPDs (02/16)									
BW	WW	YW	Total Mat.	CE	MCE	YG	REA	CW	MILK
+2.9	+46	+88	+40	+6.0	+10.0			+28	+18

S A V BRILLIANCE 8077
S: S A V RADIANCE 0801
 S A V ELBA 1094

EARLEY DATELINE 2M
D: MISS BARBARA OF MODEL FARM 4U
 MISS BARBARA OF MODEL FARM 11K

S A V BISMARCK 5682
 S A V BLACKCAP MAY 5270
 S A V NET WORTH 4200
 S A V ELBA 1094
 VERMILION DATELINE 7078
 BROCKHILL BLACK DIAMOND 9G
 CRUZ OF MODEL FARM 3G
 MISS BARBARA OF MODEL FARM 1E

Consigned by: Model Farm Angus, Bob Higgins, Quispamsis, NB (506) 847-8265



Model FA Pride 11D

Purebred Open Female

1898344 RHK 11D Feb 14/2016



This heifer is sired by SAV Radiance and the dam is by Net Worth. She is a real eye catcher with a great pedigree, and from a maintenance free cow. Will make a great show heifer and grow into a great cow. She is halter broken, vaccinated, and treated with Ivomec.

Birth Weight: 75 lbs

CANADIAN ANGUS ASSOC. EPDs (02/16)									
BW	WW	YW	Total Mat.	CE	MCE	YG	REA	CW	MILK
+2.0	+50	+95	+53	+8.0	+10.5			+31	+28

S A V BRILLIANCE 8077
S: S A V RADIANCE 0801
 S A V ELBA 1094

S A V NET WORTH 4200
D: PRIDE OF MODEL FARM 8W
 PRIDE OF MODEL FARM 14P

S A V BISMARCK 5682
 S A V BLACKCAP MAY 5270
 S A V NET WORTH 4200
 S A V ELBA 1094
 S A V 8180 TRAVELER 004
 S A V MAY 2410
 ROYAL NEW DESIGN DRCC 2074M
 PRIDE OF MODEL FARM 1K

Consigned by: Model Farm Angus, Bob Higgins, Quispamsis, NB (506) 847-8265



Model FA Camaro 12D

Purebred Bull

1898204 RHK 12C Oct 27/2015



Camaro 12D is an easy fleshing bull with a great growth pattern. He is very quiet, has a good temperament, and is halter broken. He has been shown. His SAV Camaro sire is a low birth weight curve bender and carries excellent genetic predictions in all areas. 12C is vaccinated and treated with Ivomec. He has excellent EPDs that make him eligible for the NB assistance program of 30% of purchase price up to \$1,000. Will make a good herd sire.

Birth Weight: 85 lbs

CANADIAN ANGUS ASSOC. EPDs (02/16)									
BW	WW	YW	Total Mat.	CE	MCE	YG	REA	CW	MILK
+3.6	+53	+86	+48	+2.0	+8.5			+27	+21

SITZ TRAVELER 8180
S: SAV CAMARO 9272
 SAV DUKE GIRL 7348

MVF VRD DATELINE 7078
D: PRIDE OF MODEL FARM 12U
 PRIDE OF MODEL FARM 1K

SITZ TRAVELER 8180
 SAV EMULOUS 8145
 SAV PEACEMAKER 3179
 AC DUKE GIRL 57
 VERMILION DATELINE 7078
 MVF LADY DI 60K
 BON VIEW EMULATION EXT 473
 PRIDE OF MODEL FARM 9B

Consigned by: Model Farm Angus, Bob Higgins, Quispamsis, NB (506) 847-8265



Model FA Pride 14C

Purebred Open Female

1898205 RHK 14C Nov 7/2015



14C is sired by Peak Pot Resolute out of a Net Worth dam. This heifer has a wide top and a very smooth front. She is halter broken and has been shown. She is vaccinated and treated with Ivomec.

Birth Weight: 85 lbs

CANADIAN ANGUS ASSOC. EPDs (02/16)									
BW	WW	YW	Total Mat.	CE	MCE	YG	REA	CW	MILK
+4.9	+50	+86	+46	-0.5	+6.0			+29	+21

SAV 004 PREDOMINANT 4438
S: PEAK DOT RESOLUTE 37W
 MIA OF PEAK DOT 406R

SAV NET WORTH 4200
D: PRIDE OF MODEL FARM 7W
 PRIDE OF MODEL FARM 1K

SAV 8180 TRAVELER 004
 SAV EMBLYNETTE 1182
 BASIN PRIME CUT 354K
 MIA OF PEAK DOT 316J
 SAV 8180 TRAVELER 004
 SAV MAY 2410
 BON VIEW EMULATION EXT 473
 PRIDE OF MODEL FARM 9B

Consigned by: Model Farm Angus, Bob Higgins, Quispamsis, NB (506) 847-8265



Model FA Pride 150

Purebred Open Female

1898206 RHK 15C Dec 8/2015



This heifer is sired by SAV Radiance. We used this bull for his proven calving ease and the maternal strength in his dam. A very attractive, well made heifer. She is halter broken and has been shown. She is vaccinated and treated with Ivomec.

Birth Weight: 75 lbs

CANADIAN ANGUS ASSOC. EPDs (02/16)									
BW	WW	YW	Total Mat.	CE	MCE	YG	REA	CW	MILK
+2.2	+42	+77	+42	+5.0	+8.5			+20	+21

S A V BRILLIANCE 8077	S A V BISMARCK 5682
S: S A V RADIANCE 0801	S A V BLACKCAP MAY 5270
S A V ELBA 1094	S A V NET WORTH 4200
	S A V ELBA 1094
EARNSCLIFFE STOCKMAN 5M	JEM STOCKMAN 4K
D: PRIDE OF MODEL FARM 3T	GLEN ISLAY ROSEBUD 2F
PRIDE OF MODEL FARM 5M	JEM JUSTICE 38J
	PRIDE OF MODEL FARM 5E

Consigned by: Model Farm Angus, Bob Higgins, Quispamsis, NB (506) 847-8265



Model FA Miss Barbara 160

Purebred Open Female

1898207 RHK 16C Dec 18/2015



This heifer is sired by Peak Dot Gladiator and the dam is by Net Worth. She is halter broken and has been shown. She is vaccinated and treated with Ivomec. A very attractive, well made heifer.

Birth Weight: 75 lbs

CANADIAN ANGUS ASSOC. EPDs (02/16)									
BW	WW	YW	Total Mat.	CE	MCE	YG	REA	CW	MILK
				-1.5	+4.0				

S A V ELIMINATOR 9105	RITO 707 OF IDEAL 3407 7075
S: PEAK DOT GLADIATOR 800Y	S A V ABIGALE 5646
ANNIE K OF PEAK DOT 533U	MOHNEN DYNAMITE 1356
	DOUBLE AA ANNIE K 228'01
S A V NET WORTH 4200	S A V 8180 TRAVELER 004
D: MISS BARBARA OF MODEL FARM 17Y	S A V MAY 2410
MISS BARBARA OF MODEL FARM 4U	EARLEY DATELINE 2M
	MISS BARBARA OF MODEL FARM 11K

Consigned by: Model Farm Angus, Bob Higgins, Quispamsis, NB (506) 847-8265



O'Faelen Gridmaker 108C



CANADIAN ANGUS ASSOC. EPDs (02/16)									
BW	WW	YW	Total Mat.	CE	MCE	YG	REA	CW	MILK
+2.5	+32	+61	+36	+3.0	+6.0			+11	+20

EARLEY GRID POWER 158S
S: EARLEY GRID 40W
 C4 LASS 6807

MVF TRAVELER 96R
D: O'FAELEN QUEEN RUTH
 LLB QUEEN RUTH 927R

EARLEY GRID POWER 52P
 EARLEY BARBARA 15M
 D H D TRAVELER 6807
 HARMONY HILL LASS 218
 MVF 234D TRAVELER 45N
 MVF TIBBIE 252N
 LLB NEW FRONTIER 100N
 PAT QUEEN RUTH 199G

Purebred Bred Female

1845990 OFI 108C May 11/2015

Exposed June 3-18 to Peak Dot Pioneer 576B
Exposed July 28 - Sept 15 to Cudlobe New Design 14C

Mom is one of our favourite cows: solid, good feet, calves on almost the same day every year and weans off a nice calf. With our service sires, this one should produce a real nice calf. A strong addition to any herd.

All of our animals are vaccinated according to vet recommended protocol.

Birth Weight: 78 lb Weaning Weight: 575 lb

Consigned by: O'Faelen Farms, Vernon River, PEI (902) 343-6135



O'Faelen Gridmaker 107C



CANADIAN ANGUS ASSOC. EPDs (02/16)									
BW	WW	YW	Total Mat.	CE	MCE	YG	REA	CW	MILK
+2.7	+46	+83	+39	+3.0	+7.0			+24	+16

GEARLEY GRID POWER 158S
S: EARLEY GRID 40W
 C4 LASS 6807

BABY BLACK THE ANSWER 108U
D: LLB MISSIE PRIDE 729X
 LLB MISSIE PRIDE 481U

EARLEY GRID POWER 52P
 EARLEY BARBARA 15M
 D H D TRAVELER 6807
 HARMONY HILL LASS 218
 S A V FINAL ANSWER 0035
 LEGEND LANE 410 ANNE 620
 DRYLAND ICEBERG 411
 LLB MISSIE PRIDE 308N

Purebred Bred Female

1845989 OFI 107C May 11/2015

Exposed June 3-18 to Peak Dot Pioneer 576B
Exposed July 28 - Sept 15 to Cudlobe New Design 14C

Research shows that breeding at 55% of adult weight means more calves and more \$\$\$. Out of our herd bull and exposed to our two new herd bulls, all with strong growth and carcass traits. A great addition to any herd. All of our animals are vaccinated according to vet recommended protocol.

Birth Weight: 77 lb Weaning Weight: 607 lb

Consigned by: O'Faelen Farms, Vernon River, PEI (902) 343-6135



O'Faelen Gridmaker 148C

Purebred Bred Female

1846206 OFI 148C May 26/2015



148C on the left.

Exposed June 3-18 to Peak Dot Pioneer 576B

Exposed July 28 - Sept 15 to Cudlobe New Design 14C

Research shows that breeding at 55% of adult weight results in increased longevity and more return on the dollar. Check out the service sires with YW index of 97 or better, with great carcass traits. We've done all the hard work for you with this one. All of our animals are vaccinated according to vet recommended protocol.

Birth Weight: 86 lb Weaning Weight: 557 lb

CANADIAN ANGUS ASSOC. EPDs (02/16)									
BW	WW	YW	Total Mat.	CE	MCE	YG	REA	CW	MILK
+2.1	+41	+76	+44	+5.0	+8.0			+20	+23

EARLEY GRID POWER 158S	EARLEY GRID POWER 52P
S: EARLEY GRID 40W	EARLEY BARBARA 15M
C4 LASS 6807	D H D TRAVELER 6807
	HARMONY HILL LASS 218
MODEL FARM NET WORTH 5W	S A V NET WORTH 4200
D: O'FAELEN ISLAND ARAMINA	PRIDE OF MODEL FARM 14S
O'FAELEN XAVIER	MVF TRAVELER 96R
	LLB HEIRESS 406R

Consigned by: O'Faelen Farms, Vernon River, PEI (902) 343-6135



O'Faelen Gridmaker 145C

Purebred Bred Female

1846204 OFI 145C May 26/2015



145C on the right.

Exposed June 3-18 to Peak Dot Pioneer 576B

Exposed July 28 - Sept 15 to Cudlobe New Design 14C

Research shows that breeding at 55% of adult weight means more calves and more \$\$\$. Solid cow family, consistent growth, bred to leading sires...what more can you ask for? All of our animals are vaccinated according to vet recommended protocol.

Birth Weight: 81 lb Weaning Weight: 590 lb

CANADIAN ANGUS ASSOC. EPDs (02/16)									
BW	WW	YW	Total Mat.	CE	MCE	YG	REA	CW	MILK
+3.3	+38	+70	+43	+3.0	+6.0			+24	+24

GEARLEY GRID POWER 158S	EARLEY GRID POWER 52P
S: EARLEY GRID 40W	EARLEY BARBARA 15M
C4 LASS 6807	D H D TRAVELER 6807
	HARMONY HILL LASS 218
MVF TRAVELER 96R	MVF 234D TRAVELER 45N
D: O'FAELEN TERIANN	MVF TIBBIE 252N
LLB LAVENDER LADY 430R	JDS MUCHO FRILLO 1M
	LLB LAVENDER LADY 223N

Consigned by: O'Faelen Farms, Vernon River, PEI (902) 343-6135



Red O'Faellan Rumbler 156C



CANADIAN ANGUS ASSOC. EPDs (02/16)									
BW	WW	YW	Total Mat.	CE	MCE	YG	REA	CW	MILK
+1.2	+58	+90	+47	+2.6	+2.5			+26	+19

RED CROWFOOT 83X
S: RED CROWFOOT RUMBLER 3155A
 CROWFOOT MISS BO 6181S

JL FREEDOM 8035
D: RED LLB COUNTESS LASS 669X
 RED LLB COUNTESS LASS 37U

RED CBR RUMBLER 2362-8586
 RED CROWFOOT LADY ERICA 8080U
 CROWFOOT 3500N
 CFCC 6K
 PSF FREEDOM 12S
 ROSE HILL JESTRESS 24P
 RED TER-RON CALLOWAY 15R
 RED SOO LINE COUNTESS 5267

Red Purebred Bred Female

1846210 OFI 156C May 31/2015

Exposed June 3-18 to Peak Dot Pioneer 576B
Exposed July 28 - Sept 15 to Cudlobe New Design 14C

This is probably our favourite in the sale. We have had an eye on her since she was born. Great EPD numbers, good growth, stylis and strong. A real looker in any barn and a strong addition to any herd. Again, look at those service sires!

All of our animals are vaccinated according to vet recommended protocol.

Birth Weight: 80 lb Weaning Weight: 628 lb

Consigned by: O'Faellen Farms, Vernon River, PEI (902) 343-6135



Red O'Faellen Lady Hannah



CANADIAN ANGUS ASSOC. EPDs (02/16)									
BW	WW	YW	Total Mat.	CE	MCE	YG	REA	CW	MILK
+3.8	+67	+104	+54	+0.3	-2.6	+0.09	+0.21	+37	+21

RED CROWFOOT 83X
S: RED CROWFOOT RUMBLER 3155A
 CROWFOOT MISS BO 6181S

XO CROWFOOT 0102X
D: RED XO CROWFOOT MISS S 3393A
 RED CROWFOOT MISS STRETCH 6352

RED CBR RUMBLER 2362-8586
 RED CROWFOOT LADY ERICA 8080U
 CROWFOOT 3500N
 CFCC 6K
 RED CROWFOOT MOONSHINE 8081U
 XO CROWFOOT BLACKBIRD 8810U
 RED 5L NORSEMAN KING 2291
 RED CROWFOOT STRETCH 1328L

Red Purebred Bred Female

1845864 OFI 100C May 09/2015

Exposed June 3-18 to Peak Dot Pioneer 576B
Exposed July 28 - Sept 15 to Cudlobe New Design 14C

This is a favourite of my daughter and carries her name. Check out her pedigree and you will see what potential she has. Combine that with the service sires and you have loads of style and substance in the calf that is coming. A "can't miss" addition to any herd. All of our animals are vaccinated according to vet recommended protocol.

Birth Weight: 83 lb Weaning Weight: 530 lb

Consigned by: O'Faellen Farms, Vernon River, PEI (902) 343-6135



Commercial Bred Female - Bannockburn Valley #7

born Jan 12, 2015

Sire: Burnside Rib Eye 13Z (Hereford)

Dam: Bannockburn Valley Janet 71Z (Angus)

Observed breeding June 9, 2016 to GF McIntosh 207C (Angus). Exposed June 8 - July 1, 2016
Halter broken F1 Black Baldie carrying service to GF McIntosh 207C.

Consigned by: Dixon Family, Clyde River, PEI (902) 675-2229



Commercial Female and Calf - Bannockburn Valley #89

born July 28, 2013

Sire: Burnside Wizard of Oz 31W (Hereford)

Dam: Bannockburn Valley Dolly 49X (Angus)

By sale time, this well grown F1 Black Baldie will have an Angus sired calf at foot (due mid-September)

Consigned by: Dixon Family, Clyde River, PEI (902) 675-2229



Commercial Bred Female - Bannockburn Valley #103

born Sept 10, 2014

Sire: Burnside Rib Eye 13Z (Hereford)

Dam: Bannockburn Valley Jewel 43Z (Angus)

Exposed from March 5 to May 3, 2016 to MKHF Rocky 148B (Angus)
F1 Black Baldie carrying service to the easy calving Angus bull, MKHF Rocky 148B from MacKinnon Homestead.

Consigned by: Dixon Family, Clyde River, PEI (902) 675-2229